



Cosmograph Daytona

Oyster, 40 mm, white gold

**This Oyster Perpetual
Cosmograph Daytona in
18 ct white gold, with a
bright blue dial and an
Oyster bracelet,
features an 18 ct white
gold bezel with an
engraved tachymetric
scale.**



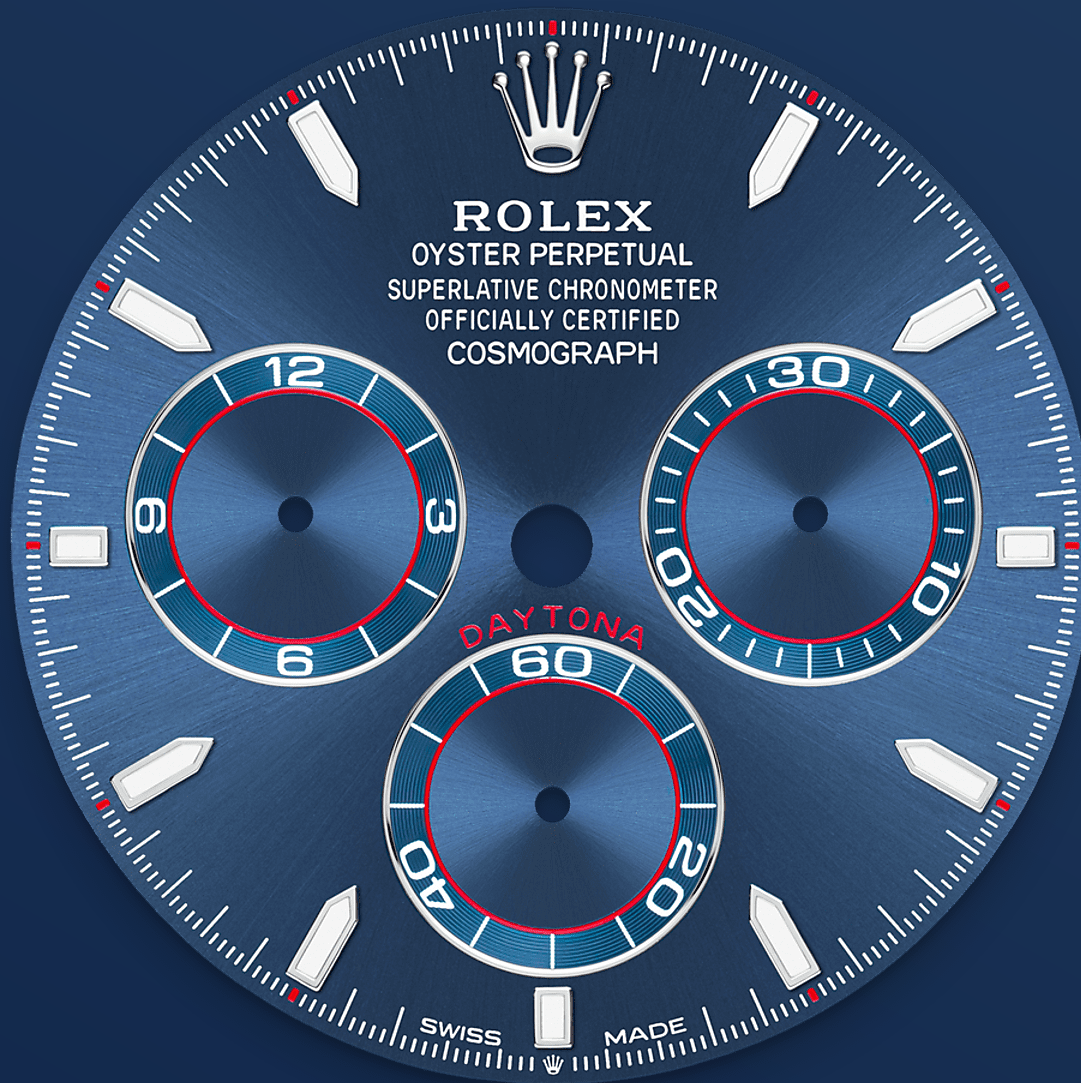
THE TACHYMETRIC SCALE

High-performance chronograph

With its tachymetric scale, its three counters and its pushers, the Cosmograph Daytona was designed to be the ultimate timing tool for endurance racing drivers. The bezel features a tachymetric scale to read average speed over a given distance based on elapsed time.

This scale offers optimal legibility, making the Cosmograph Daytona the ideal instrument for

measuring speeds up to 400 units per hour,
expressed in kilometres or miles.



BRIGHT BLUE DIAL

With chronograph counters

This model features a bright blue dial with snailed counters, 18 ct gold applique hour markers and hands with a Chromalight display, a highly-legible luminescent material.

The dial allows drivers to accurately map out their track times and tactics without fail.



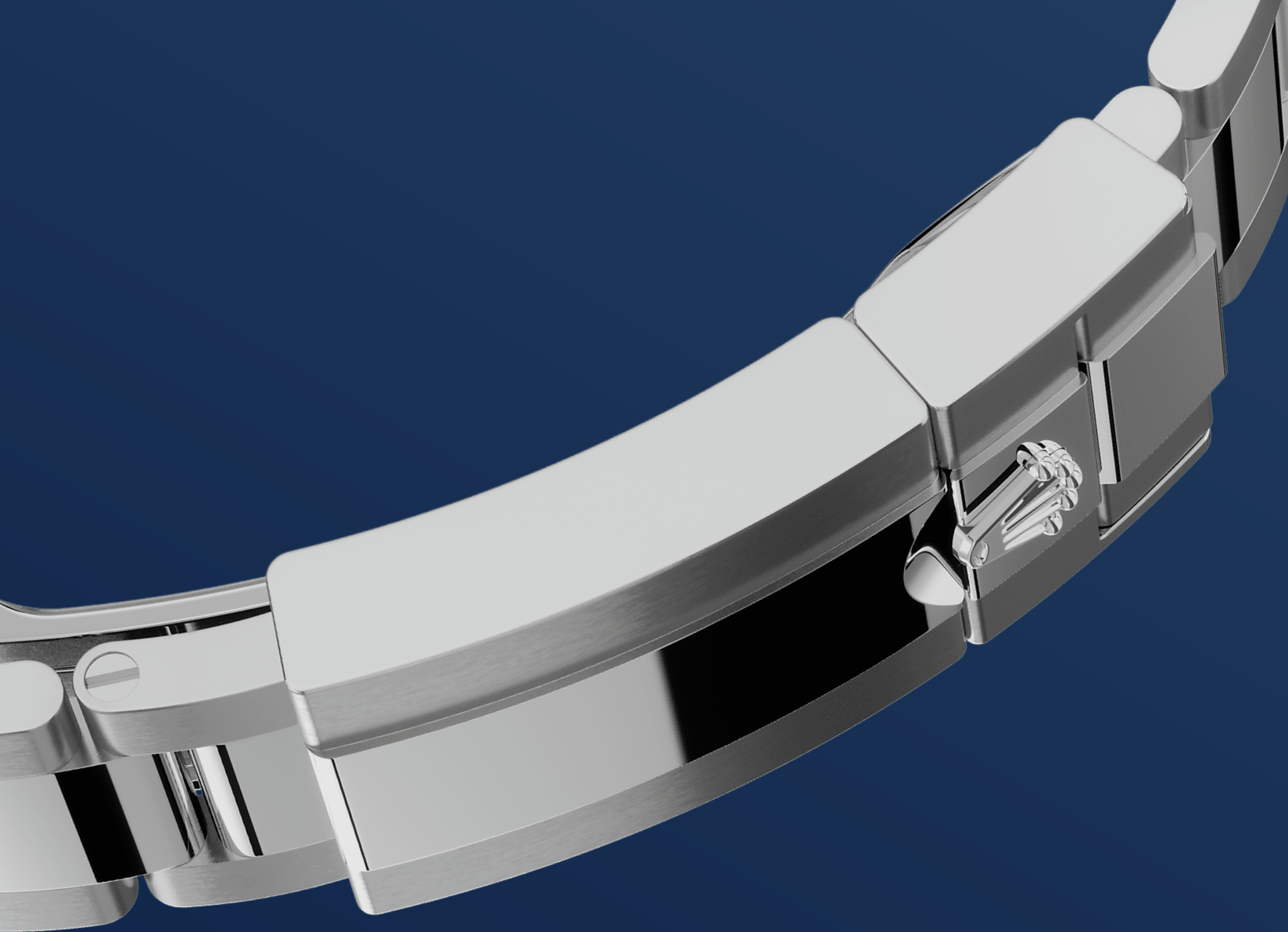
18 CT WHITE GOLD

Commitment to excellence

By operating its own exclusive foundry, Rolex has the unrivalled ability to cast the highest quality 18 ct gold alloys. According to the proportion of silver, copper, platinum or palladium added, different types of 18 ct gold are obtained: yellow, pink or white.

They are made with only the purest metals and meticulously inspected in an in-house laboratory with state-of-the-art equipment, before the gold is

formed and shaped with the same painstaking attention to quality. Rolex's commitment to excellence begins at the source.



THE OYSTER BRACELET

Alchemy of form and function

The design, development and production of Rolex bracelets and clasps, as well as the stringent tests they face, involve advanced high technology. And, as with all the components of the watch, aesthetic controls by the human eye guarantee impeccable beauty.

The Oyster bracelet is a perfect alchemy of form and function. First introduced in the late 1930s, this particularly robust and comfortable metal

bracelet with its broad, flat three-piece links
remains the most universal bracelet in the Oyster
collection.

More Cosmograph Daytona technical details

Reference 126509

Model Case

Type

Oyster, 40 mm, white gold

Diameter

40 mm

Material

White gold

Bezel

Fixed, with engraved tachymetric scale, in 18 ct white gold

Oyster Architecture

Monobloc middle case, screw-down case back and winding crown

Winding Crown

Screw-down, Triplock triple waterproofness system

Crystal

Scratch-resistant sapphire

Water Resistance

Waterproof to 100 metres / 330 feet

Movement

Type

Perpetual, mechanical chronograph, self-winding

Calibre

4131, manufacture Rolex

Precision

-2/+2 sec/day, after casing

Oscillator

Paramagnetic blue Parachrom hairspring. High-performance Paraflex shock absorbers

Winding

Bidirectional self-winding via
Perpetual rotor

Power reserve

Approximately 72 hours

Functions

Centre hour and minute hands,
small seconds hand at 6 o'clock.
Chronograph via centre seconds
hand, 30-minute counter at 3
o'clock and 12-hour counter at 9
o'clock. Stop seconds for exact
time setting

Bracelet

Type

Oyster, three-piece solid links

Clasp

Folding Oysterlock safety clasp with
Easylink 5 mm comfort extension
link

Bracelet Material

18 ct white gold

Dial

Type

Bright blue

Details

Highly legible Chromalight display
with long-lasting blue luminescence

Certification

Type

Superlative Chronometer (COSC +
Rolex certification after casing)

Explore and discover more on Rolex.com

All intellectual property rights such as trademarks, service marks, trade names, designs and copyrights are reserved.

Nothing contained in this website may be reproduced without written permission. Rolex reserves the right at all times to modify the models featured in the present website.

