



# Datejust 36

Oyster, 36 mm, Oystersteel and yellow gold

**This Oyster Perpetual  
Datejust 36 in  
Oystersteel and yellow  
gold features a  
champagne colour,  
diamond-set dial and a  
Jubilee bracelet.**



CHAMPAGNE-COLOUR DIAL

## A watchmaking technique

This dial features diamonds in 18 ct gold settings. The sunray finish creates delicate light reflections on many dials in the Oyster Perpetual collection. It is obtained using masterful brushing techniques that create grooves running outwards from the centre of the dial.

Light is diffused consistently along each engraving, creating a characteristic subtle glow that moves depending on the position of the wrist.



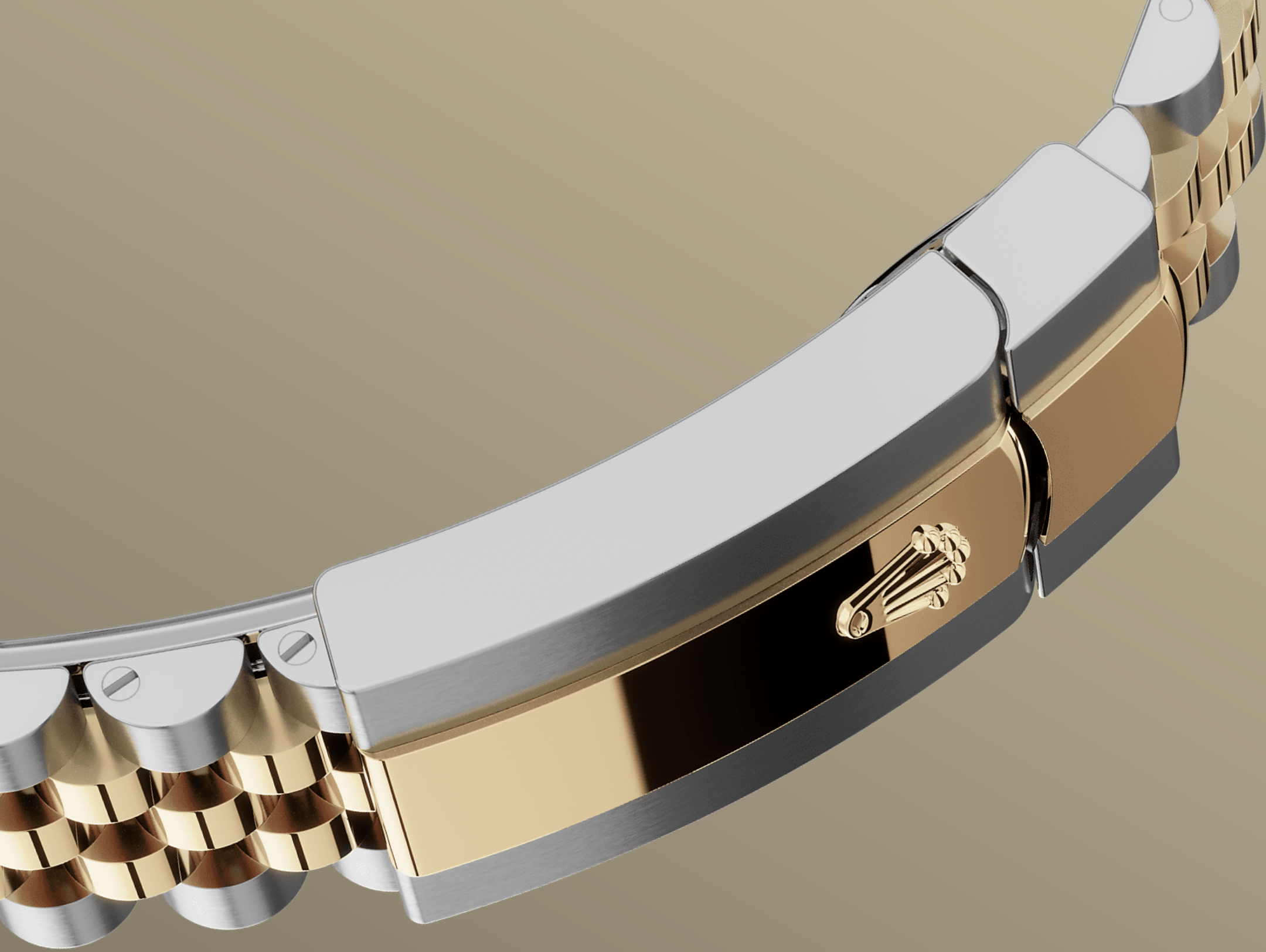


YELLOW ROLESOR

## A meeting of two metals

Gold is coveted for its lustre and nobility. Steel reinforces strength and reliability. Together, they harmoniously combine the best of their properties.

A true Rolex signature, Rolesor has featured on Rolex models since the early 1930s, and was trademarked as a name in 1933. It is one of the prominent pillars of the Oyster Perpetual collection.



THE JUBILEE BRACELET

## Supple and comfortable

The design, development and production of Rolex bracelets and clasps, as well as the stringent tests they face, involve advanced high technology.

And, as with all the components of the watch, aesthetic controls by the human eye guarantee impeccable beauty. The Jubilee, a supple and comfortable five-piece link metal bracelet, was designed and made especially for the launch of the Oyster Perpetual Datejust in 1945.



## THE CYCLOPS LENS

# A magnifying lens

The Cyclops lens is one of the most distinctive Rolex features, and one of the most recognizable.

Named after the one-eyed giant of Greek mythology, the Cyclops lens magnifies the watch's emblematic date display for easy reading. Behind the Cyclops, as with every feature of a Rolex timepiece, lies a history of invention, research and development, and the endless search for perfection.

# More Datejust technical details

Reference 126203

## Model Case

---

### Type

Oyster, 36 mm, Oystersteel and yellow gold

### Diameter

36 mm

### Material

Yellow Rolesor

### Bezel

Domed

### Oyster Architecture

Monobloc middle case, screw-down case back and winding crown

### Winding Crown

Screw-down, Twinlock double waterproofness system

### Crystal

Scratch-resistant sapphire, Cyclops lens over the date

### Water Resistance

Waterproof to 100 metres / 330 feet

## Movement

---

### Type

Perpetual, mechanical, self-winding

### Calibre

3235, Manufacture Rolex

### Precision

-2/+2 sec/day, after casing

### Oscillator

Paramagnetic blue Parachrom hairspring. High-performance Paraflex shock absorbers

### Winding

Bidirectional self-winding via Perpetual rotor



**Power reserve**

Approximately 70 hours

**Functions**

Centre hour, minute and seconds hands. Instantaneous date with rapid setting. Stop-seconds for precise time setting

## Bracelet

---

**Type**

Jubilee, five-piece links

**Clasp**

Folding Oysterclasp with Easylink 5 mm comfort extension link

**Bracelet Material**

Yellow Rolesor - combination of Oystersteel and yellow gold

## Dial

---

**Type**

Champagne-colour set with diamonds

**Gem setting**

Diamonds in 18 ct gold settings

## Certification

---

**Type**

Superlative Chronometer (COSC + Rolex certification after casing)

# Explore and discover more on Rolex.com

**All intellectual property rights such as trademarks, service marks, trade names, designs and copyrights are reserved.**

Nothing contained in this website may be reproduced without written permission. Rolex reserves the right at all times to modify the models featured in the present website.

