



## Datejust 36

Oyster, 36 mm, Oystersteel, white gold and diamonds

**This Oyster Perpetual  
Datejust 36 in  
Oystersteel and white  
gold features a bright  
black dial and an Oyster  
bracelet.**



DIAMOND-SET BEZEL

## A sparkling symphony

Gem-setters, like sculptors, finely carve the precious metal to hand-shape the seat in which each gemstone will be perfectly lodged. With the art and craft of a jeweller, the stone is placed and meticulously aligned with the others, then firmly secured in its gold or platinum setting.

Besides the intrinsic quality of the stones, several other criteria contribute to the beauty of Rolex gem-setting: the precise alignment of the height of the gems, their orientation and position, the regularity, strength and proportions of the setting

as well as the intricate finishing of the metalwork.  
A sparkling symphony to enhance the watch and  
enchant the wearer.



BRIGHT BLACK DIAL

## A watchmaking technique

The sunray finish creates delicate light reflections on many dials in the Oyster Perpetual collection. It is obtained using masterful brushing techniques that create grooves running outwards from the centre of the dial.

Light is diffused consistently along each engraving, creating a characteristic subtle glow that moves depending on the position of the wrist. Once the sunray finish has been completed, the

dial colour is applied using Physical Vapour Deposition or electroplating. A light coat of varnish gives the dial its final look.

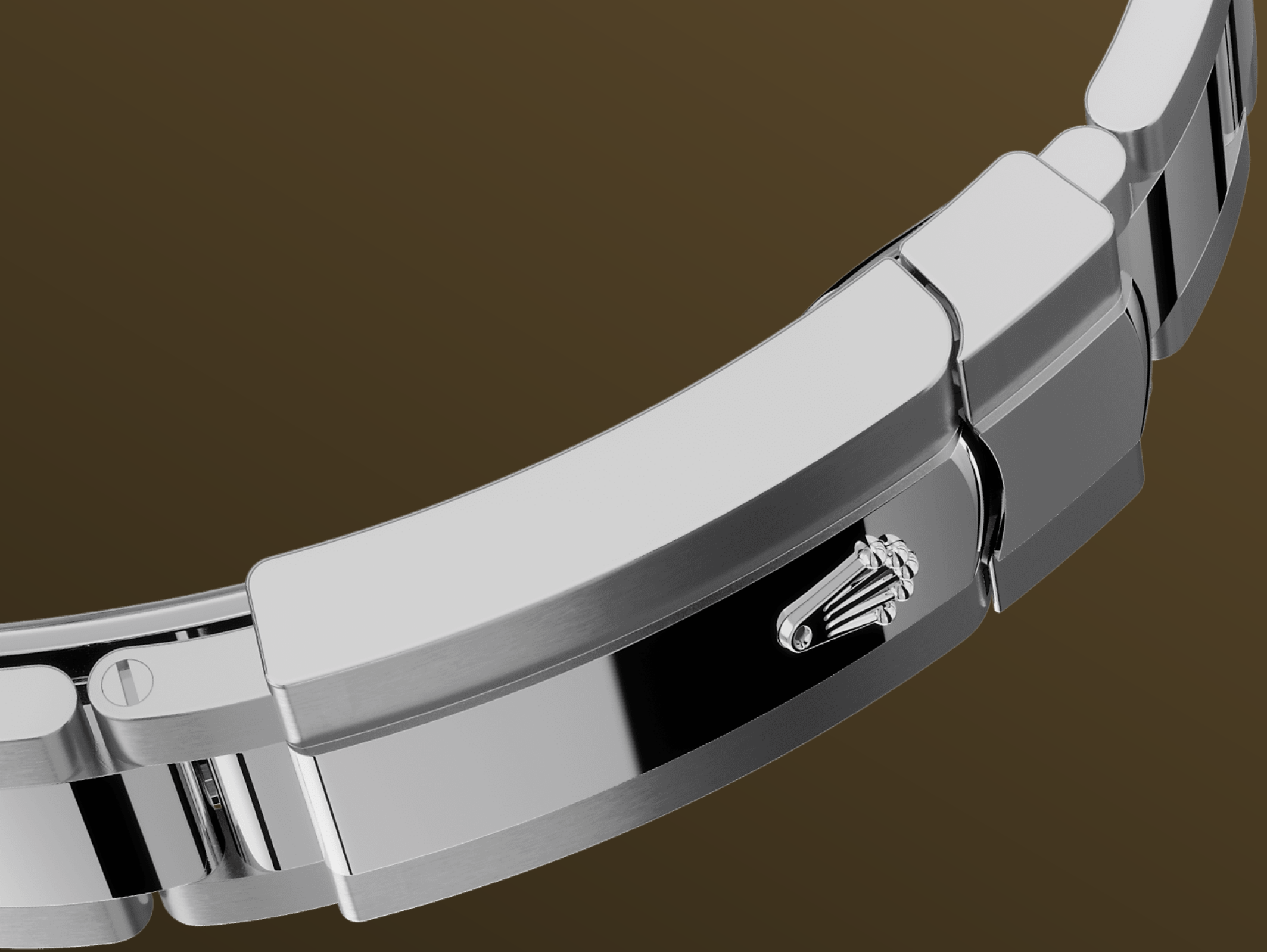


WHITE ROLESOR

## A meeting of two metals

Gold is coveted for its lustre and nobility. Steel reinforces strength and reliability. Together, they harmoniously combine the best of their properties.

A true Rolex signature, Rolesor has featured on Rolex models since the early 1930s, and was trademarked as a name in 1933. It is one of the prominent pillars of the Oyster Perpetual collection.



THE OYSTER BRACELET

## Alchemy of form and function

The Oyster bracelet is a perfect alchemy of form and function, aesthetics and technology, designed to be both robust and comfortable.

It is equipped with an Oysterclasp and the Easylink comfort extension link, also exclusive to Rolex. This ingenious system allows the wearer to increase the bracelet length by approximately 5 mm, providing additional comfort in any circumstance.

# More Datejust technical details

Reference 126284RBR

## Model Case

---

### Type

Oyster, 36 mm, Oystersteel, white gold and diamonds

### Diameter

36 mm

### Material

White Rolesor

### Bezel

Set with diamonds

### Oyster Architecture

Monobloc middle case, screw-down case back and winding crown

### Winding Crown

Screw-down, Twinlock double waterproofness system

### Crystal

Scratch-resistant sapphire, Cyclops lens over the date

### Water Resistance

Waterproof to 100 metres / 330 feet

## Movement

---

### Type

Perpetual, mechanical, self-winding

### Calibre

3235, Manufacture Rolex

### Precision

-2/+2 sec/day, after casing

### Oscillator

Paramagnetic blue Parachrom hairspring. High-performance Paraflex shock absorbers

### Winding

Bidirectional self-winding via Perpetual rotor

**Power reserve**

Approximately 70 hours

**Functions**

Centre hour, minute and seconds hands. Instantaneous date with rapid setting. Stop-seconds for precise time setting

## Bracelet

---

**Type**

Oyster, three-piece solid links

**Clasp**

Folding Oysterclasp with Easylink 5 mm comfort extension link

**Bracelet Material**

Oystersteel

## Dial

---

**Type**

Bright black

**Details**

Highly legible Chromalight display with long-lasting blue luminescence

## Certification

---

**Type**

Superlative Chronometer (COSC + Rolex certification after casing)

# Explore and discover more on Rolex.com

**All intellectual property rights such as trademarks, service marks, trade names, designs and copyrights are reserved.**

Nothing contained in this website may be reproduced without written permission. Rolex reserves the right at all times to modify the models featured in the present website.

