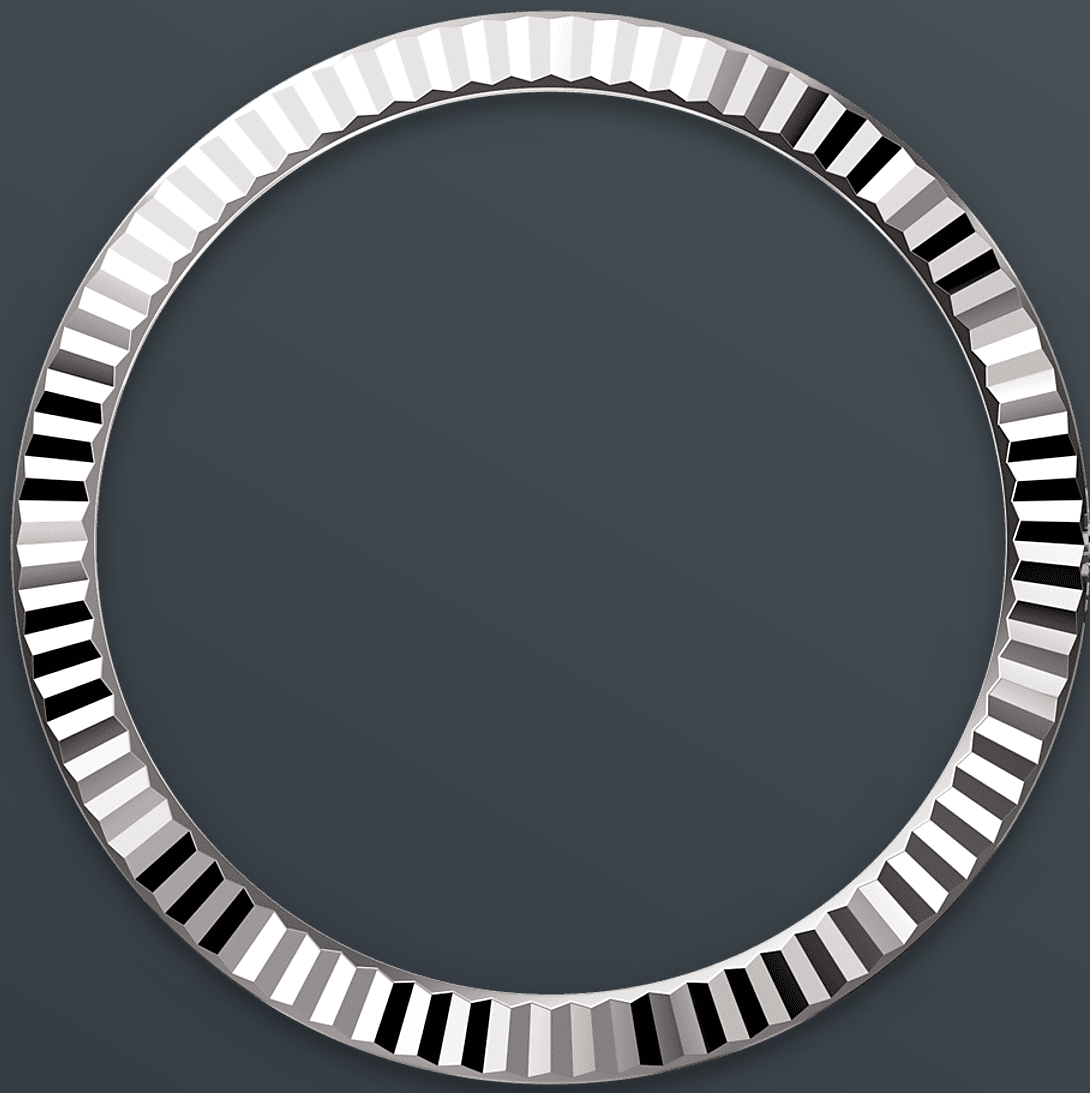




Datejust 41

Oyster, 41 mm, Oystersteel and white gold

**This Oyster Perpetual
Datejust 41 in
Oystersteel and white
gold features a slate dial
and a Jubilee bracelet.**



FLUTED BEZEL

A Rolex signature

The Rolex fluted bezel is a mark of distinction. Originally, the fluting of the Oyster bezel had a functional purpose: it served to screw the bezel onto the case helping to ensure the waterproofness of the watch.

It was therefore identical to the fluting on the case back, which was also screwed onto the case for waterproofness, using specific Rolex tools. Over time, the fluting became an aesthetic element, a genuine Rolex signature feature. Today the fluted

bezel is a mark of distinction, in gold on this
Datejust 41.



SLATE DIAL

A watchmaking technique

The sunray finish creates delicate light reflections on many dials in the Oyster Perpetual collection. It is obtained using masterful brushing techniques that create grooves running outwards from the centre of the dial.

Light is diffused consistently along each engraving, creating a characteristic subtle glow that moves depending on the position of the wrist. Once the sunray finish has been completed, the

dial colour is applied using Physical Vapour Deposition or electroplating. A light coat of varnish gives the dial its final look.

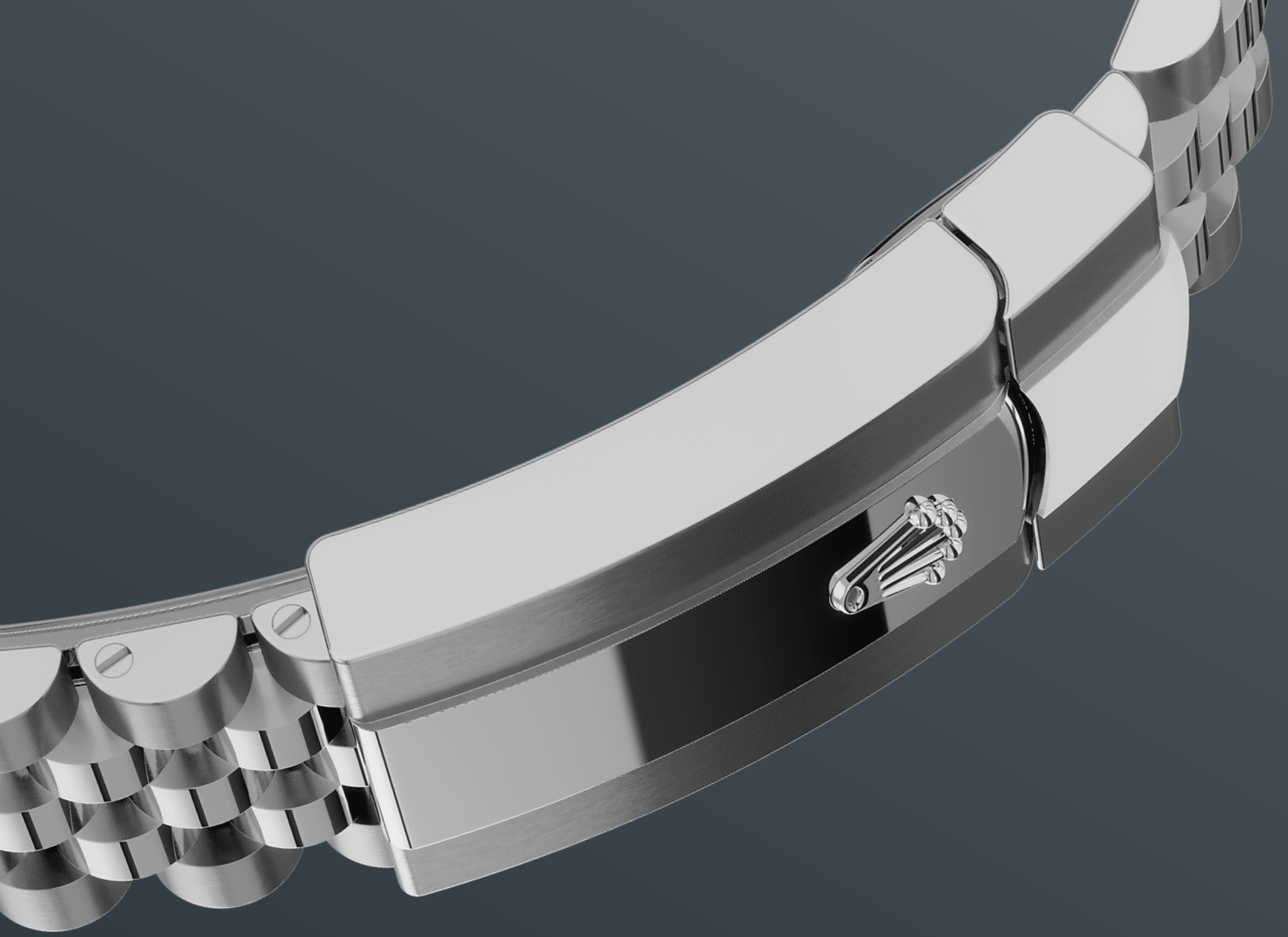


WHITE ROLESOR

A meeting of two metals

Gold is coveted for its lustre and nobility. Steel reinforces strength and reliability. Together, they harmoniously combine the best of their properties.

A true Rolex signature, Rolesor has featured on Rolex models since the early 1930s, and was trademarked as a name in 1933. It is one of the prominent pillars of the Oyster Perpetual collection.



THE JUBILEE BRACELET

Supple and comfortable

The design, development and production of Rolex bracelets and clasps, as well as the stringent tests they face, involve advanced high technology.

And, as with all the components of the watch, aesthetic controls by the human eye guarantee impeccable beauty. The Jubilee, a supple and comfortable five-piece link metal bracelet, was designed and made especially for the launch of the Oyster Perpetual Datejust in 1945.

More Datejust technical details

Reference 126334

Model Case

Type

Oyster, 41 mm, Oystersteel and white gold

Diameter

41 mm

Material

White Rolesor

Bezel

Fluted

Oyster Architecture

Monobloc middle case, screw-down case back and winding crown

Winding Crown

Screw-down, Twinlock double waterproofness system

Crystal

Scratch-resistant sapphire, Cyclops lens over the date

Water Resistance

Waterproof to 100 metres / 330 feet

Movement

Type

Perpetual, mechanical, self-winding

Calibre

3235, Manufacture Rolex

Precision

-2/+2 sec/day, after casing

Oscillator

Paramagnetic blue Parachrom hairspring. High-performance Paraflex shock absorbers

Winding

Bidirectional self-winding via Perpetual rotor

Power reserve

Approximately 70 hours

Functions

Centre hour, minute and seconds hands. Instantaneous date with rapid setting. Stop-seconds for precise time setting

Bracelet

Type

Jubilee, five-piece links

Clasp

Folding Oysterclasp with Easylink 5 mm comfort extension link

Bracelet Material

Oystersteel

Dial

Type

Slate

Details

Highly legible Chromalight display with long-lasting blue luminescence

Certification

Type

Superlative Chronometer (COSC + Rolex certification after casing)

Explore and discover more on Rolex.com

All intellectual property rights such as trademarks, service marks, trade names, designs and copyrights are reserved.

Nothing contained in this website may be reproduced without written permission. Rolex reserves the right at all times to modify the models featured in the present website.

