



GMT-Master II

Oyster, 40 mm, Oystersteel

**The Oyster Perpetual
GMT-Master II in
Oystersteel with a black
dial and a Jubilee
bracelet.**



24-HOUR ROTATABLE BEZEL

Innovative high- technology

This model features a black dial and a two-colour Cerachrom bezel insert in green and black ceramic. In addition to conventional hour, minute and seconds hands, the GMT-Master II features an arrow-tipped hand, which circles the dial once every 24 hours, as well as a bidirectional rotatable 24-hour graduated bezel.

The distinctively coloured 24-hour hand displays the “home” reference time in a first time zone

which can be read on the graduations on the bezel. The traveller's local time is easily set by "jumping" from hour to hour, thanks to an ingenious mechanism operated via the winding crown: the hour hand can be adjusted forwards or backwards independently of the minute and seconds hands. This allows travellers to adapt to their new time zone without affecting the precision of their timekeeping. The Cerachrom bezel insert features an original colour combination: black and an exclusive green that is reserved for this model.



BLACK DIAL

High legibility in all circumstances

Like all Rolex Professional watches, the GMT-Master II offers exceptional legibility in all circumstances, and especially in the dark, thanks to its Chromalight display. The broad hands and hour markers in simple shapes – triangles, circles, rectangles – are filled with a luminescent material emitting a long-lasting glow.

On this novel version of the watch, the crown and crown guard are on the left side of the watch case.

The date aperture and the Cyclops lens are at 9 o'clock.

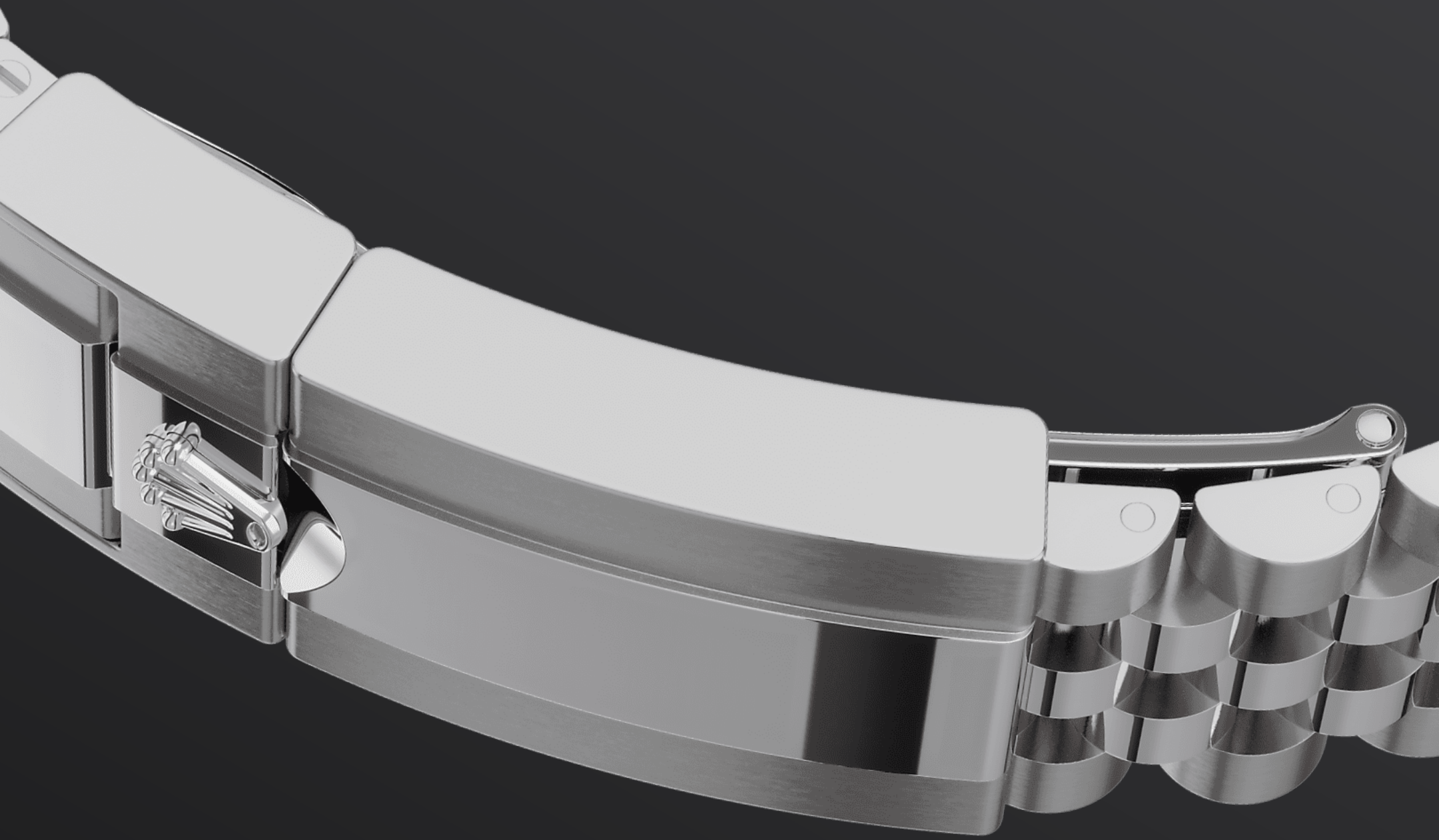


OYSTERSTEEL

Highly resistant to corrosion

Rolex uses Oystersteel for its steel watch cases. Specially developed by the brand, Oystersteel belongs to the 904L steel family, alloys most commonly used in high-technology and in the aerospace and chemical industries, where maximum resistance to corrosion is essential.

Oystersteel is extremely resistant, offers an exceptional finish once polished and maintains its beauty even in the harshest environments.



THE JUBILEE BRACELET

Supple and comfortable

This version of the GMT-Master II is fitted with a Jubilee bracelet. Supple and comfortable, the five-piece link Jubilee bracelet was specially created for the launch of the Oyster Perpetual Datejust model in 1945.

The Jubilee bracelet on this model is equipped with a Rolex-designed, patented Oysterlock folding safety clasp, which prevents accidental opening. It also features the Easylink comfort extension link, developed by the brand, which allows the bracelet length to be increased by

approximately 5 mm. A concealed attachment system ensures seamless visual continuity between the bracelet and case.

More GMT-Master II

technical details

Reference 126720VTNR

Model Case

Type

Oyster, 40 mm, Oystersteel

Diameter

40 mm

Material

Oystersteel

Bezel

Bidirectional rotatable 24-hour graduated bezel. Two-colour green and black Cerachrom insert in ceramic, moulded numerals and graduations

Oyster Architecture

Monobloc middle case, screw-down case back and winding crown

Winding Crown

Screw-down, Triplock triple waterproofness system

Crystal

Scratch-resistant sapphire, Cyclops lens over the date

Water Resistance

Waterproof to 100 metres / 330 feet

Movement

Type

Perpetual, mechanical, self-winding, GMT function

Calibre

3285, Manufacture Rolex

Precision

-2/+2 sec/day, after casing

Oscillator

Paramagnetic blue Parachrom hairspring. High-performance Paraflex shock absorbers

Winding

Bidirectional self-winding via Perpetual rotor

Power reserve

Approximately 70 hours

Functions

Centre hour, minute and seconds hands. 24-hour display. Second time zone with independent rapid-setting of the hour hand.

Instantaneous date. Stop-seconds for precise time setting

Bracelet

Type

Jubilee, five-piece links

Bracelet Material

Oystersteel

Clasp

Folding Oysterlock safety clasp with Easylink 5 mm comfort extension link

Dial

Type

Black

Details

Highly legible Chromalight display with long-lasting blue luminescence

Certification

Type

Superlative Chronometer (COSC + Rolex certification after casing)

Explore and discover more on Rolex.com

All intellectual property rights such as trademarks, service marks, trade names, designs and copyrights are reserved.

Nothing contained in this website may be reproduced without written permission. Rolex reserves the right at all times to modify the models featured in the present website.

